

***2022/2023 Redistricting Plan
Proposed Hickory Tree Elementary and
Narcoossee Elementary Schools
Attendance Zone Boundaries***

***Guidelines for
Establishing
Redistricting Committee
and
Calendar for
Establishing
Attendance Zones***

THE SCHOOL BOARD OF OSCEOLA COUNTY, FLORIDA

Guidelines for Establishing Redistricting Committees

SCHOOL COMMITTEES

A redistricting committee representing each school involved in the redistricting process shall be established by the School Advisory Council at each affected school.

Each school committee shall be broadly representative of the school community.

Each school committee shall be composed of five members, one of which shall be an administrator at the school. No more than one of the four remaining members of the committee shall be an employee of the School District of Osceola County.

DISTRICTWIDE COMMITTEE

There shall be a Districtwide Committee established. The structure of the committee shall be as follows:

1. Superintendent;
2. Deputy Superintendent of Human Services, or designee;
3. Assistant Superintendents for Elementary, Middle, and High School Curriculum & Instruction, or designees;
4. Assistant Superintendent for School Operations, or designee;
5. Chief Financial Officer for Business & Finance, or designee;
6. Chief Facilities Officer, or designee;
7. Director of Transportation, or designee; and
8. Designated Principals impacted by the redistricting process and their 5-member committees.

**THE SCHOOL BOARD
OF
OSCEOLA COUNTY, FLORIDA**

**Calendar for Establishing Attendance Zones
for Hickory Tree Elementary and Narcoossee Elementary Schools
for the 2023/2024 School Year**

01/2023 – 02/2023	Staff, Principals, and School Advisory Committees meet to discuss attendance zones for Hickory Tree Elementary and Narcoossee Elementary schools.
01/17/2023	School Board meets to set calendar, to adopt guidelines, and to determine if any additional schools will be considered for redistricting this year.
01/25/2023 02/08/2023	Districtwide Redistricting Committee meets to review data, determine additional needs, and to prepare preliminary plans. Meetings to be held at 6:00 P.M. at the Transportation Department, International Room, 401 Simpson Road, Kissimmee, FL.
01/20/2023 01/29/2023	Public Hearing Notice to Advertise
02/21/2023	Public Hearing to adopt elementary school attendance zone boundaries for the 2023/2024 school year to be held at 6:00 P.M. at the Administrative Complex, 817 Bill Beck Boulevard, Kissimmee, FL.
Note:	Additional meetings may be scheduled if necessary or scheduled meetings may be cancelled if they are not required. Dates are subject to change if additional meetings are scheduled or if scheduled meetings are cancelled.
	All proposed attendance zone boundaries can be viewed at each respective school or by visiting, www.osceolaschools.net and then following the steps provided: (1) Departments, (2) Planning Services, (3) Redistricting & School Zoning Information, (4) Redistricting, (5) Hickory Tree Elementary and Narcoossee Elementary School Redistricting

Public Hearing Notice
for
Hickory Tree Elementary and
Narcoossee Elementary Schools

**Proposals for Attendance Zones
for Elementary and High Schools
for the 2023/2024 School Year
Osceola District Schools**

In an attempt to balance school populations, seven existing schools serving the Kissimmee, and St. Cloud areas could be affected by redistricting changes.

Representatives (parents and staff) of the existing seven schools, along with district staff were involved in the preparation of the accompanying information.

The School Board of Osceola County will hold a Public Hearing and adopt a plan for attendance zones for the 2023/2024 School Year for the following schools:

Grades K-5: Hickory Tree Elementary and Narcoossee Elementary

**Grades 9-12: Celebration High, Harmony High, Osceola High,
St. Cloud High, and Tohopekaliga High**

The Public Hearing is as follows:

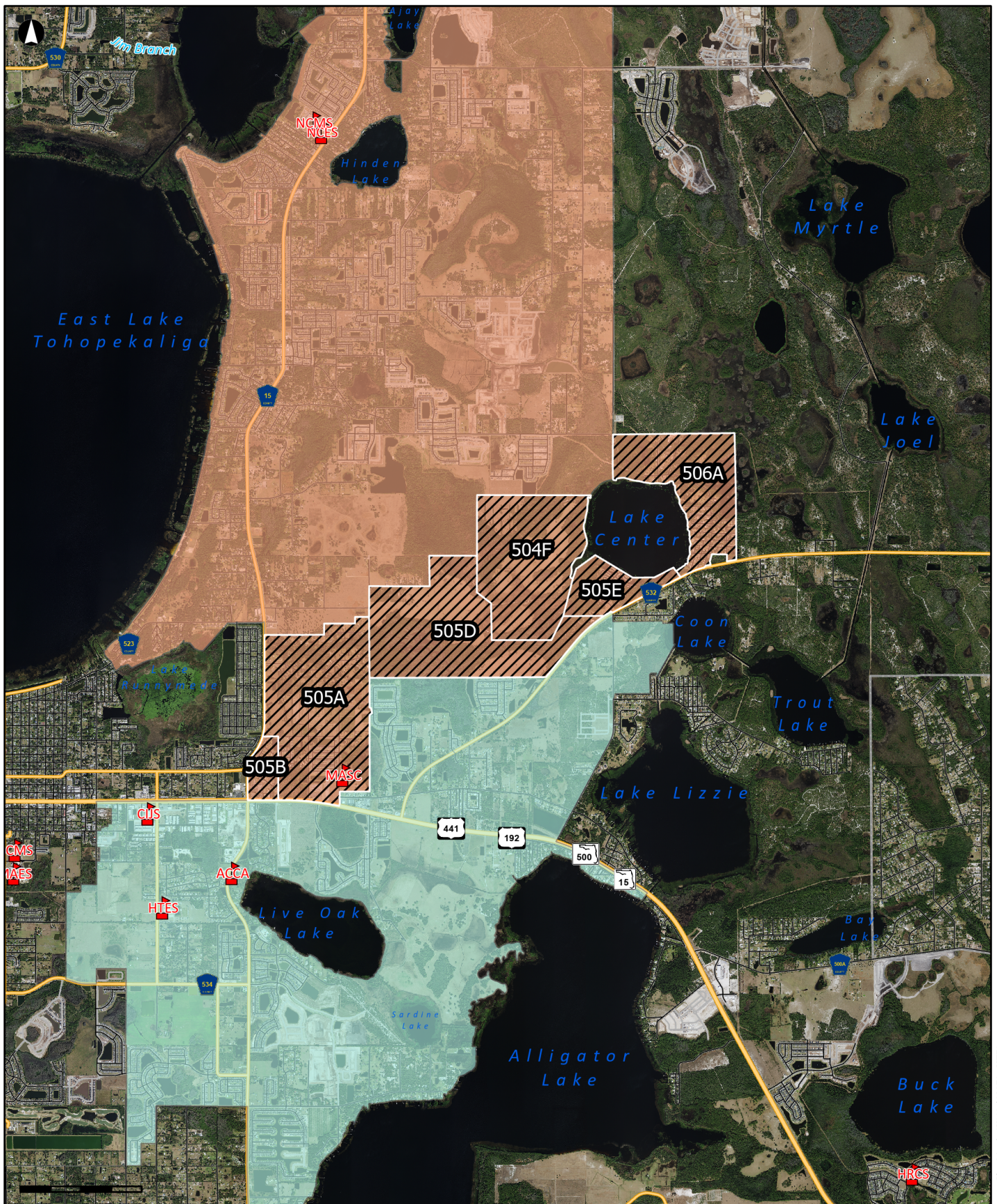
**Public Hearing 6:00 P.M.
February 21, 2023
Central Administrative Center
Board Room
817 Bill Beck Boulevard
Kissimmee, Florida 34741**

All proposed attendance zone boundaries can be viewed at each respective school or by visiting, www.osceolaschools.net and then following the steps provided: (1) Departments, (2) Planning Services, (3) Redistricting & School Zoning Information, (4) Redistricting, and (5) Hickory Tree Elementary, Narcoossee Elementary, Celebration High, Harmony High, Osceola High, St. Cloud High School, and Tohopekaliga High Redistricting.

Osceola Star: 01/20/2023

Orlando Sentinel: 01/29/2023

***2023/2024 Proposed Changes to
Hickory Tree Elementary and
Narcoossee Elementary School
Attendance Zone Boundaries***



Proposed Redistricting Area
NCES to HTES

Draft redistricting proposed for SY2324



Planning Services Department
The School District of Osceola County, FL



Schools

Draft_NCEStoHTES

Hickory Tree Elementary

Narcoossee Elementary

Disclaimer: All data, information, and maps are provided "as is" without any warranty or representation of accuracy, timeliness, or completeness. The School District of Osceola County, Florida (the "School District") cannot accept any responsibility for errors, omissions, or positional accuracy. The School District specifically disclaims any warranty, either express or implied, including, without limitation, the implied warranties of merchantability and fitness for a particular purpose. The burden of determining accuracy, timeliness, merchantability, and fitness for a particular use rests solely on the requestor, and the requestor assumes all risk as to quality and performance. In no event will the School District or its staff be liable for any direct, indirect, incidental, special, consequential, or other damages, including, without limitation, loss of profit, arising out of the use of the data, information, and maps even if the School District has been advised of the possibility of such damages. The requestor acknowledges and accepts the limitations of the data, information, and maps, including, without limitation, the fact that the data, information, and maps are dynamic and are in a constant state of maintenance, correction, and update.

Student Demographics

<i>Proposed School by Study Area</i>		
<i>Study Area</i>	<i>Current K-5 School</i>	<i>Proposed K-5 School</i>
<i>505A</i>	<i>Narcoossee Elementary</i>	<i>Hickory Tree Elementary</i>
<i>505B</i>	<i>Narcoossee Elementary</i>	<i>Hickory Tree Elementary</i>
<i>505D</i>	<i>Narcoossee Elementary</i>	<i>Hickory Tree Elementary</i>
<i>505E</i>	<i>Narcoossee Elementary</i>	<i>Hickory Tree Elementary</i>
<i>504F</i>	<i>Narcoossee Elementary</i>	<i>Hickory Tree Elementary</i>
<i>506A</i>	<i>Narcoossee Elementary</i>	<i>Hickory Tree Elementary</i>

<i>Student Counts by Study Area (Oct FTE 2022/23 Students)</i>						
<i>Study Area</i>	<i>1st*</i>	<i>2nd</i>	<i>3rd</i>	<i>4th</i>	<i>5th</i>	<i>Total</i>
<i>505A</i>	<i>10</i>	<i>11</i>	<i>21</i>	<i>15</i>	<i>10</i>	<i>67</i>
<i>505B</i>	<i>5</i>	<i>3</i>	<i>4</i>	<i>5</i>	<i>7</i>	<i>24</i>
<i>505D</i>	<i>0</i>	<i>0</i>	<i>0</i>	<i>0</i>	<i>0</i>	<i>0</i>
<i>505E</i>	<i>0</i>	<i>1</i>	<i>0</i>	<i>2</i>	<i>1</i>	<i>4</i>
<i>504F</i>	<i>0</i>	<i>0</i>	<i>0</i>	<i>0</i>	<i>0</i>	<i>0</i>
<i>506A</i>	<i>12</i>	<i>10</i>	<i>7</i>	<i>9</i>	<i>9</i>	<i>47</i>
<i>Total</i>	<i>27</i>	<i>25</i>	<i>32</i>	<i>31</i>	<i>27</i>	<i>142</i>

**Based on Current 2022/2023 Kindergarten enrollment.
All counts from the October 14, 2022, Student Geocode*

<i>Student School of Attendance by Study Area</i>							
<i>Enrolled School</i>	<i>505A</i>	<i>505B</i>	<i>505D</i>	<i>505E</i>	<i>504F</i>	<i>506A</i>	<i>Total</i>
<i>Creative Inspiration Journey</i>	<i>1</i>	<i>-</i>	<i>-</i>	<i>-</i>	<i>-</i>	<i>3</i>	<i>4</i>
<i>Family Empowerment Scholarship</i>	<i>4</i>	<i>1</i>	<i>-</i>	<i>3</i>	<i>-</i>	<i>1</i>	<i>9</i>
<i>Florida Cyber Charter</i>	<i>2</i>	<i>-</i>	<i>-</i>	<i>-</i>	<i>-</i>	<i>-</i>	<i>2</i>
<i>Harmony Community</i>	<i>2</i>	<i>-</i>	<i>-</i>	<i>-</i>	<i>-</i>	<i>3</i>	<i>5</i>
<i>Hickory Tree Elementary</i>	<i>-</i>	<i>-</i>	<i>-</i>	<i>-</i>	<i>-</i>	<i>4</i>	<i>4</i>
<i>Kissimmee Elementary</i>	<i>-</i>	<i>1</i>	<i>-</i>	<i>-</i>	<i>-</i>	<i>-</i>	<i>1</i>
<i>Lakeview Elementary</i>	<i>1</i>	<i>3</i>	<i>-</i>	<i>-</i>	<i>-</i>	<i>2</i>	<i>6</i>
<i>Mater Academy at St. Cloud</i>	<i>28</i>	<i>4</i>	<i>-</i>	<i>-</i>	<i>-</i>	<i>2</i>	<i>34</i>
<i>Michigan Avenue Elementary</i>	<i>1</i>	<i>-</i>	<i>-</i>	<i>-</i>	<i>-</i>	<i>-</i>	<i>1</i>
<i>Narcoossee Elementary</i>	<i>28</i>	<i>14</i>	<i>-</i>	<i>1</i>	<i>-</i>	<i>31</i>	<i>74</i>
<i>Renaissance Charter at Boggy Creek</i>	<i>-</i>	<i>1</i>	<i>-</i>	<i>-</i>	<i>-</i>	<i>-</i>	<i>1</i>
<i>St. Cloud Elementary</i>	<i>-</i>	<i>-</i>	<i>-</i>	<i>-</i>	<i>-</i>	<i>1</i>	<i>1</i>
<i>Total</i>	<i>67</i>	<i>24</i>	<i>-</i>	<i>4</i>	<i>-</i>	<i>47</i>	<i>142</i>

Projected Enrollment

NCES to HTES	School	Plan Area	Year	Grades K-5	CHOICE Sending	CHOICE Receiving	NET TOTAL K5	Functional Capacity	Functional Utilization	Functional Capacity W/ Relocatable	Functional Utilization W/ Relocatable
SB Member: 5 <i>Sunbridge to Open SY2425 move 372 students</i>	NCES	5	2023/2024	1,802	316	152	1,638	984	166%	1,516	108%
	NCES	5	2023/2024	1,586	312	148	1,422	984	145%	1,516	94%
	NCES	5	2024/2025	1,495	329	148	1,314	984	134%	1,516	87%
	NCES	5	2025/2026	1,685	334	148	1,499	984	152%	1,516	99%
	NCES	5	2026/2027	1,976	333	148	1,791	984	182%	1,516	118%
NCES to HTES	School	Plan Area	Year	TOTAL K-8	CHOICE Sending	CHOICE Receiving	NET TOTAL K5	Functional Capacity	Functional Utilization	Functional Capacity W/ Relocatable	Functional Utilization W/ Relocatable
SB Member: 5 <i>Roan Bridge to Open SY2526 move 394 students</i>	HTES	9	2023/2024	1,111	403	159	867	955	91%	1,153	75%
	HTES	9	2023/2024	1,277	471	163	969	955	101%	1,153	84%
	HTES	9	2024/2025	1,394	468	163	1,089	955	114%	1,153	94%
	HTES	9	2025/2026	1,147	457	163	853	955	89%	1,153	74%
	HTES	9	2026/2027	1,323	457	163	1,029	955	108%	1,153	89%

Notes:

Choice in and out based on current calculations

Assumes all students in redistricting area go to the new school

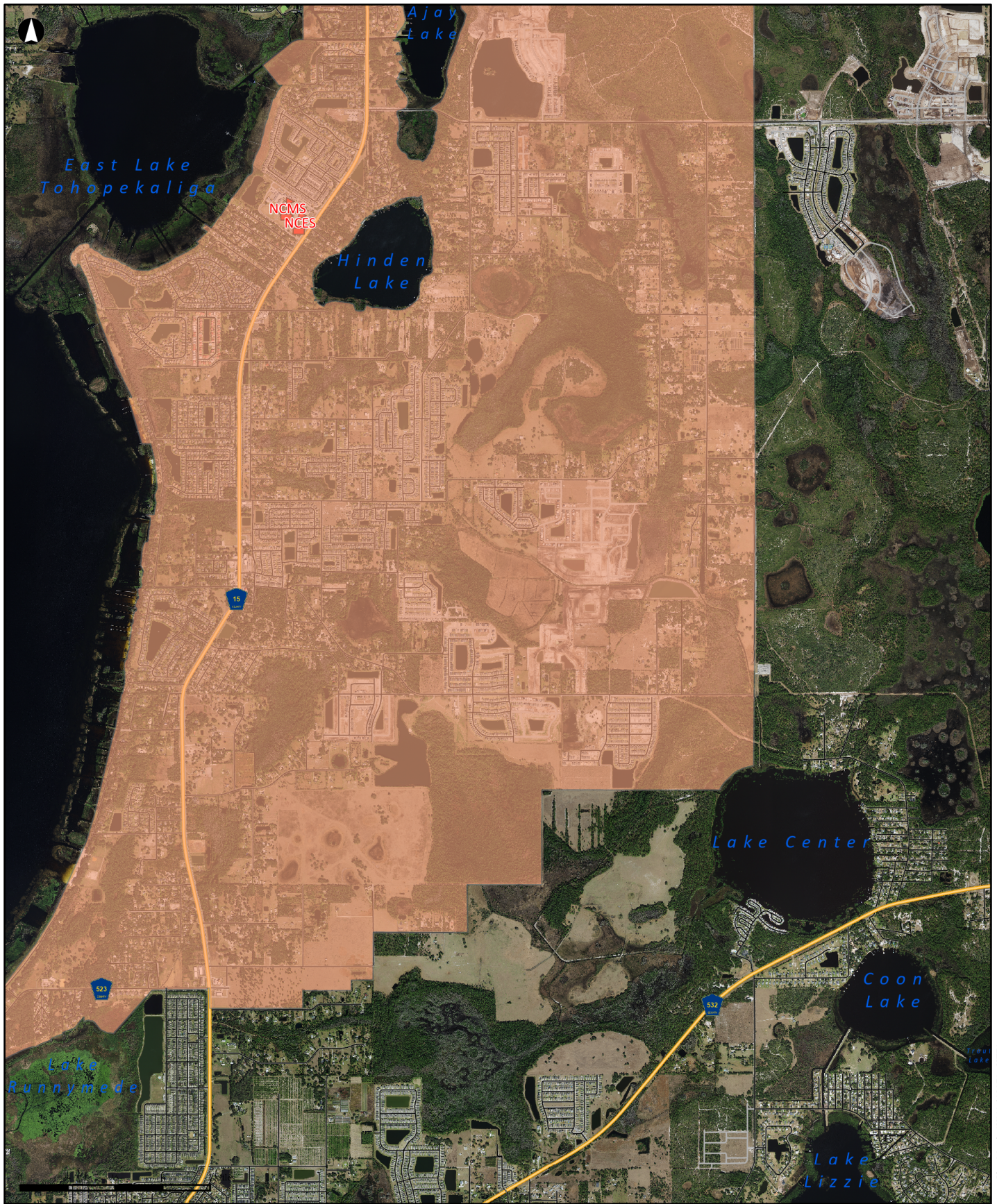
Assumes 6 relocatable units placed at HTES prior to the 2023/24 school year

Does not account for future redistricting which may occur for the 2024/25 or 2025/26 school years

There is the potential of a new Charter school to open for the 2024/25 school year within the NCES, NCMS, and HRHS attendance zones, this has the potential to change projections students in the Narcoossee Rd, Harmony Community, and Hickory Rd areas

Draft attendance boundaries for Sunbridge and Roanbridge have not been finalized, therefore, total students effected by school openings may change

***2023/2024 Proposed
Hickory Tree Elementary and
Narcoossee Elementary Schools
Attendance Zone Boundaries***



Proposed Attendance Boundary
Narcossee Elementary
SY2023/24

Draft redistricting proposed for SY23/24



Planning Services Department
 The School District of Osceola County, FL



Schools

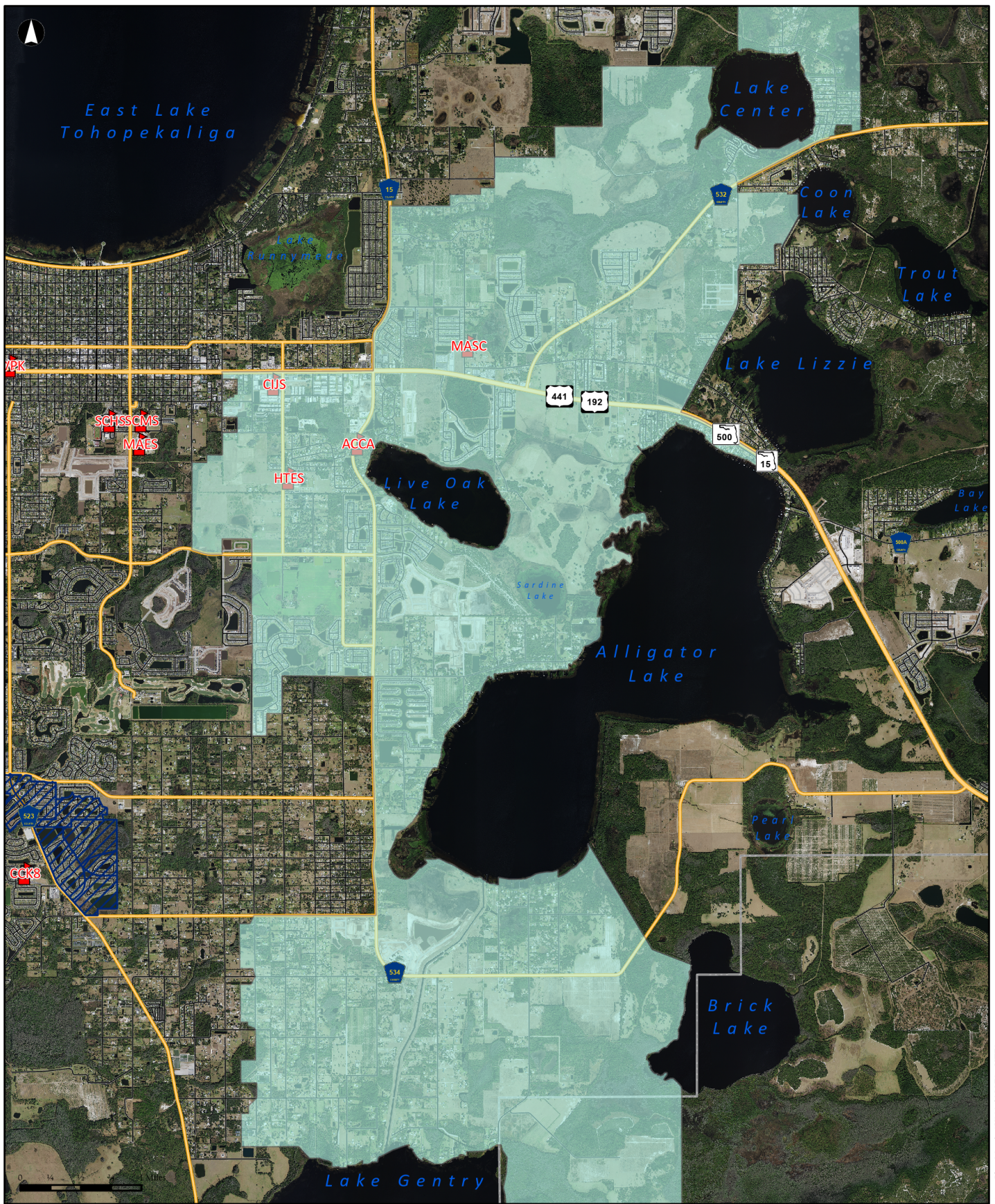


Hickory Tree Elementary



Narcossee Elementary

Disclaimer: All data, information, and maps are provided "as is" without any warranty or representation of accuracy, timeliness, or completeness. The School District of Osceola County, Florida (the "School District") cannot accept any responsibility for errors, omissions, or positional accuracy. The School District specifically disclaims any warranty, either express or implied, including, without limitation, the implied warranties of merchantability and fitness for a particular purpose. The burden of determining accuracy, timeliness, merchantability, and fitness for a particular use rests solely on the requestor, and the requestor assumes all risk as to quality and performance. In no event will the School District or its staff be liable for any direct, indirect, incidental, special, consequential, or other damages, including, without limitation, loss of profit, arising out of the use of the data, information, and maps even if the School District has been advised of the possibility of such damages. The requestor acknowledges and accepts the limitations of the data, information, and maps, including, without limitation, the fact that the data, information, and maps are dynamic and are in a constant state of maintenance, correction, and update.



**Proposed Attendance Boundary
Hickory Tree Elementary
SY2023/24**

Draft redistricting proposed for SY2324



Planning Services Department
The School District of Osceola County, FL



Schools



Hickory Tree Elementary



Narcossee Elementary

Disclaimer: All data, information, and maps are provided "as is" without any warranty or representation of accuracy, timeliness, or completeness. The School District of Osceola County, Florida (the "School District") cannot accept any responsibility for errors, omissions, or positional accuracy. The School District specifically disclaims any warranty, either express or implied, including, without limitation, the implied warranties of merchantability and fitness for a particular purpose. The burden of determining accuracy, timeliness, merchantability, and fitness for a particular use rests solely on the requestor, and the requestor assumes all risk as to quality and performance. In no event will the School District or its staff be liable for any direct, indirect, incidental, special, consequential, or other damages, including, without limitation, loss of profit, arising out of the use of the data, information, and maps even if the School District has been advised of the possibility of such damages. The requestor acknowledges and accepts the limitations of the data, information, and maps, including, without limitation, the fact that the data, information, and maps are dynamic and are in a constant state of maintenance, correction, and update.

*Proposed Streets to Transfer
from Narcoossee Elementary*

<i>Streets to Transfer from Narcoossee Elementary to Hickory Tree Elementary</i>		
---	--	--

ADAM ST	GENESIS CT	PARKWAY EAST
APPLE ST	GOLD CREST DR	PERCH DR
ASHTON PARK PL	GOLDEN RIVER LN	PINE ISLAND DR SOUTH
ASHTON PARK BLVD	GREEN DRAGON DR	PUFFIN RD
BENNETT CT	HANSOM RD	RAIN LILY PL
BERNETTI PL	HARKLEY RUNYAN RD	RIB AVE
BLUEPOINT ST	HAYWOOD RUFFIN RD	RIVER CREST AVE
BONAVENTURE DR	E IRLO BRONSON MEM HWY	RIVERSIDE WAY
BONNIE CT	JESS CT	ROPER RD
CREATION ST	JUDITH CT	SERPENT CT
DARYL CT	K C DURHAM RD	SHIPWRECK LN
DEEPWATER DR	LAGUNA CIR	ST FRANCIS LN
DIANE CT	LILLIAN LEE RD	STAR RUBY AVE
EDEN DR	MAINSAIL LN	STARBOARD DR
EVE ST	MAURY RD	TEMPTATION CT
FALL ST	S NARCOOSSEE RD	
FIDDLEWOOD WAY	NEWTON CT	
FIG LEAF ST	NORA TYSON RD	
FOXTAIL FERN WAY	NORTH SHORE DR	